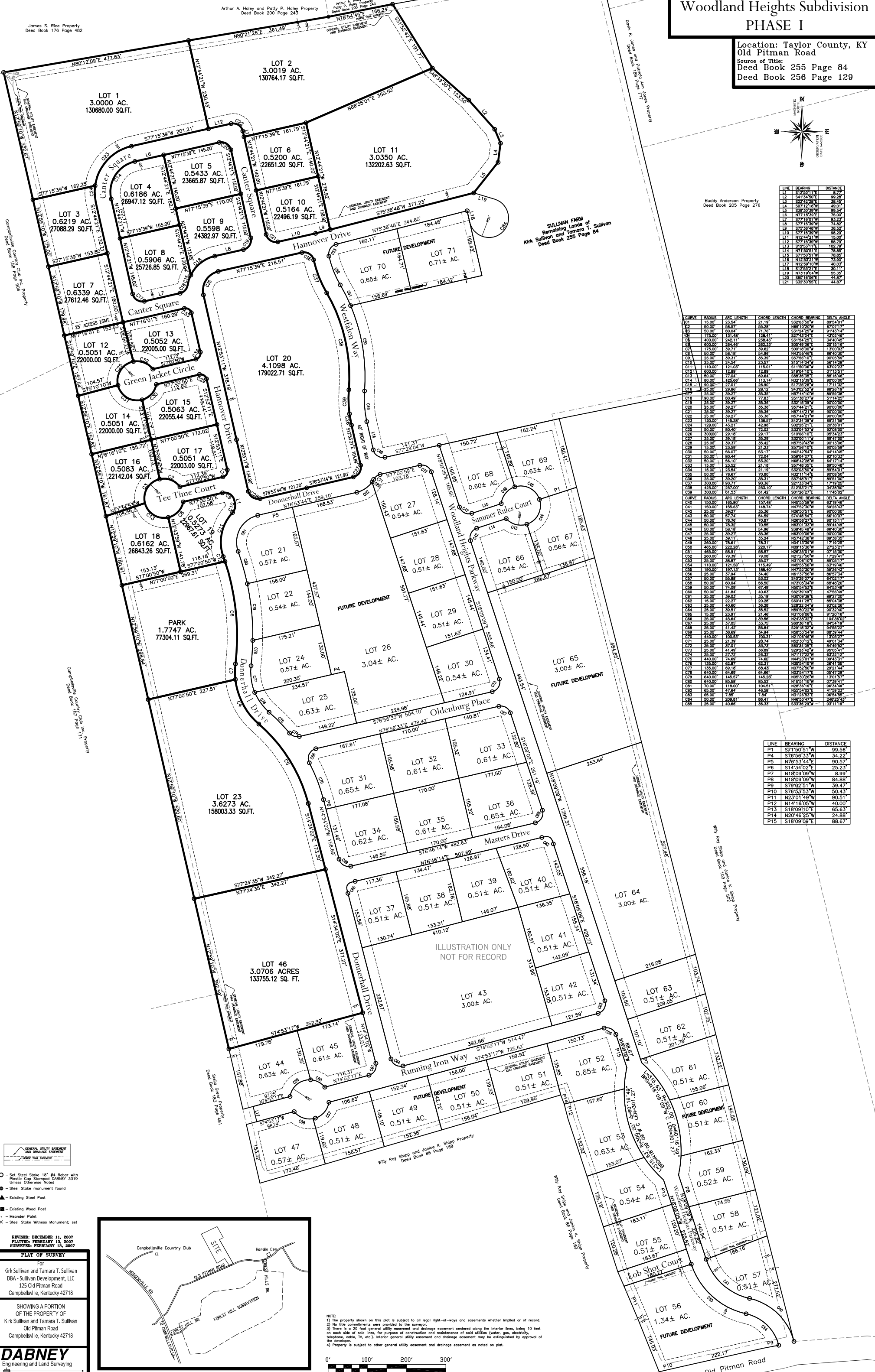


Woodland Heights Subdivision PHASE I

Location: Taylor County, KY
Old Pitman Road
Source of Title:
Deed Book 255 Page 84
Deed Book 256 Page 129



LINE	BEARING	DISTANCE
L1	S17°25'11"E	8.77'
L2	S32°42'28"E	38.45'
L3	S02°12'59"W	99.24'
L4	S02°12'59"W	75.00'
L5	S77°15'39"W	74.82'
L6	S77°15'39"W	38.52'
L7	S77°15'39"W	61.29'
L8	S77°15'39"W	15.00'
L9	S77°15'39"W	78.85'
L10	S77°15'39"W	78.85'
L11	N12°42'11"E	102.29'
L12	S77°15'39"W	78.85'
L13	S77°15'39"W	78.85'
L14	N71°50'51"E	73.90'
L15	S77°15'39"W	40.33'
L16	S77°15'39"W	30.11'
L17	N72°19'04"W	55.35'
L18	S77°15'39"W	44.38'
L19	S72°50'55"E	44.87'

CURVE	RADIUS	ARC LENGTH	CHORD LENGTH	CHORD BEARING	DELTA ANGLE
C1	115.00'	23.58'	21.19'	S69°03'00"W	89°59'11"
C2	50.00'	28.57'	25.25'	S31°24'28"E	87°03'17"
C3	50.00'	80.04'	71.76'	S17°24'28"E	91°43'14"
C4	175.00'	131.48'	128.41'	S13°42'52"E	89°24'24"
C5	400.00'	242.11'	238.43'	S31°24'28"E	34°40'45"
C6	800.00'	284.46'	282.33'	S09°49'36"E	28°18'16"
C7	175.00'	39.71'	39.42'	S77°15'39"W	13°00'00"
C8	50.00'	58.19'	54.96'	N43°58'48"E	68°40'30"
C9	35.00'	39.31'	35.39'	S77°15'39"W	13°00'00"
C10	25.00'	24.54'	23.57'	S15°14'04"W	56°14'28"
C11	110.00'	121.03'	115.01'	S11°50'06"E	63°02'23"
C12	100.00'	12.69'	12.89'	N33°15'39"W	61°13'51"
C13	50.00'	77.04'	69.84'	S35°35'55"E	88°18'48"
C14	80.00'	37.01'	28.90'	S77°28'54"W	97°11'59"
C15	25.00'	28.86'	28.12'	S43°02'02"W	68°26'19"
C16	25.00'	28.86'	28.12'	S43°02'02"W	68°26'19"
C17	25.00'	28.86'	28.12'	S43°02'02"W	68°26'19"
C18	25.00'	28.86'	28.12'	S43°02'02"W	68°26'19"
C19	25.00'	28.86'	28.12'	S43°02'02"W	68°26'19"
C20	25.00'	28.86'	28.12'	S43°02'02"W	68°26'19"
C21	25.00'	28.86'	28.12'	S43°02'02"W	68°26'19"
C22	25.00'	28.86'	28.12'	S43°02'02"W	68°26'19"
C23	130.00'	148.28'	136.53'	S42°14'59"W	69°21'59"
C24	120.00'	43.21'	42.86'	S02°25'21"E	20°38'01"
C25	20.00'	60.40'	72.02'	S72°44'51"E	69°20'59"
C26	300.00'	29.18'	29.17'	S10°08'10"E	08°54'23"
C27	25.00'	39.31'	35.39'	N33°15'39"W	61°13'51"
C28	25.00'	39.31'	35.39'	N33°15'39"W	61°13'51"
C29	15.00'	23.59'	21.23'	S57°54'10"E	60°29'59"
C30	15.00'	23.59'	21.23'	S57°54'10"E	60°29'59"
C31	80.00'	80.44'	72.04'	S59°04'27"E	92°10'33"
C32	50.00'	58.19'	54.96'	N63°59'07"W	68°40'30"
C33	25.00'	39.31'	35.39'	N33°15'39"W	61°13'51"
C34	15.00'	23.59'	21.23'	S57°54'10"E	60°29'59"
C35	15.00'	23.59'	21.23'	S57°54'10"E	60°29'59"
C36	25.00'	39.31'	35.39'	N33°15'39"W	61°13'51"
C37	300.00'	90.71'	90.36'	S21°33'04"E	17°19'25"
C38	125.00'	297.00'	293.10'	S12°53'14"E	13°29'50"
C39	50.00'	61.53'	61.42'	S01°28'27"E	11°42'02"

CURVE	RADIUS	ARC LENGTH	CHORD LENGTH	CHORD BEARING	DELTA ANGLE
C40	150.00'	165.80'	157.48'	N47°52'50"W	59°26'43"
C41	150.00'	165.80'	157.48'	N47°52'50"W	59°26'43"
C42	50.00'	58.19'	54.96'	S77°15'39"W	13°00'00"
C43	50.00'	58.19'	54.96'	S77°15'39"W	13°00'00"
C44	50.00'	58.19'	54.96'	S77°15'39"W	13°00'00"
C45	50.00'	58.19'	54.96'	S77°15'39"W	13°00'00"
C46	50.00'	58.19'	54.96'	S77°15'39"W	13°00'00"
C47	25.00'	39.31'	35.39'	N33°15'39"W	61°13'51"
C48	25.00'	39.31'	35.39'	N33°15'39"W	61°13'51"
C49	280.00'	78.81'	78.81'	N04°13'39"W	17°19'25"
C50	485.00'	223.28'	223.17'	S33°01'11"E	33°05'29"
C51	485.00'	223.28'	223.17'	S33°01'11"E	33°05'29"
C52	280.00'	78.81'	78.81'	N04°13'39"W	17°19'25"
C53	25.00'	39.31'	35.39'	N33°15'39"W	61°13'51"
C54	110.00'	121.03'	115.01'	N45°50'58"E	63°19'46"
C55	180.00'	197.13'	186.49'	N61°37'58"E	66°57'44"
C56	25.00'	37.01'	34.40'	S49°29'07"E	64°09'17"
C57	50.00'	58.19'	54.96'	N72°44'51"E	69°20'59"
C58	50.00'	58.19'	54.96'	N72°44'51"E	69°20'59"
C59	50.00'	58.19'	54.96'	N72°44'51"E	69°20'59"
C60	50.00'	58.19'	54.96'	N72°44'51"E	69°20'59"
C61	50.00'	58.19'	54.96'	N72°44'51"E	69°20'59"
C62	15.00'	23.59'	21.23'	S57°54'10"E	60°29'59"
C63	15.00'	23.59'	21.23'	S57°54'10"E	60°29'59"
C64	25.00'	39.31'	35.39'	N33°15'39"W	61°13'51"
C65	15.00'	23.59'	21.23'	S57°54'10"E	60°29'59"
C66	25.00'	39.31'	35.39'	N33°15'39"W	61°13'51"
C67	25.00'	39.31'	35.39'	N33°15'39"W	61°13'51"
C68	25.00'	39.31'	35.39'	N33°15'39"W	61°13'51"
C69	25.00'	39.31'	35.39'	N33°15'39"W	61°13'51"
C70	440.00'	100.53'	100.31'	N21°08'46"W	13°05'27"
C71	25.00'	37.01'	34.40'	N62°30'07"E	67°01'54"
C72	25.00'	37.01'	34.40'	N62°30'07"E	67°01'54"
C73	25.00'	37.01'	34.40'	N62°30'07"E	67°01'54"
C74	25.00'	37.01'	34.40'	N62°30'07"E	67°01'54"
C75	440.00'	74.89'	74.89'	N44°23'01"W	09°43'31"
C76	135.00'	148.28'	136.53'	N32°54'11"E	64°10'58"
C77	135.00'	148.28'	136.53'	N32°54'11"E	64°10'58"
C78	840.00'	64.86'	64.86'	N03°54'17"E	06°47'29"
C79	840.00'	64.86'	64.86'	N03°54'17"E	06°47'29"
C80	840.00'	64.86'	64.86'	N03°54'17"E	06°47'29"
C81	70.00'	118.90'	108.53'	N15°51'15"W	07°39'41"
C82	85.00'	47.84'	46.58'	N55°40'02"E	41°59'23"
C83	85.00'	47.84'	46.58'	N55°40'02"E	41°59'23"
C84	50.00'	209.81'	85.41'	N46°53'47"E	24°27'53"
C85	25.00'	40.66'	36.33'	S33°39'29"W	63°11'19"

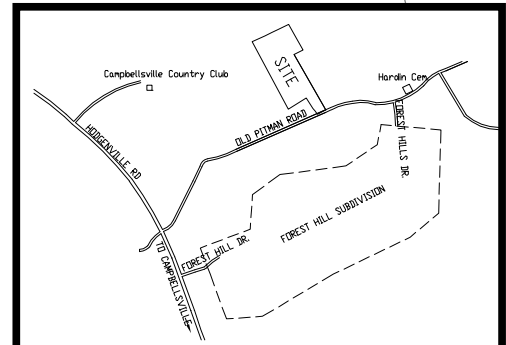
LINE	BEARING	DISTANCE
P1	S71°50'51"W	99.56'
P4	S76°56'33"W	34.22'
P5	N76°53'44"E	90.57'
P6	S14°34'02"E	25.23'
P7	N18°09'09"W	8.99'
P8	N18°09'09"W	84.88'
P9	S79°02'51"W	39.47'
P10	S76°53'53"W	50.43'
P11	N23°01'49"W	90.51'
P12	N14°18'05"W	40.00'
P13	S18°09'10"E	65.63'
P14	N20°46'25"W	24.88'
P15	S18°09'09"E	88.67'

- - Set Stake 18" #4 Rebar with Plastic Cap Stamped DABNEY 3319 Unless Otherwise Noted
- - Steel Stake monument found
- ▲ - Existing Steel Post
- - Existing Wood Post
- - Monument Point
- × - Steel Stake Witness Monument; set

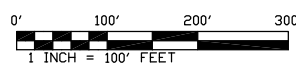
REVISED: DECEMBER 11, 2007
PLATTED: FEBRUARY 15, 2007
SURVEYED: FEBRUARY 15, 2007

PLAT OF SURVEY
For
Kirk Sullivan and Tamara T. Sullivan
DBA - Sullivan Development, LLC
125 Old Pitman Road
Campbellsville, Kentucky 42718

SHOWING A PORTION
OF THE PROPERTY OF
Kirk Sullivan and Tamara T. Sullivan
Old Pitman Road
Campbellsville, Kentucky 42718



NOTE:
1) The property shown on this plat is subject to all legal right-of-ways and easements whether implied or of record.
2) No title commitments were provided to the surveyor.
3) There is a 20' foot general utility easement and drainage easement centered along the interior lines, being 10 feet on each side of said lines, for purpose of construction and maintenance of said utilities (water, gas, electricity, telephone, cable, TV, etc.). Interior general utility easement and drainage easement may be extinguished by approval of the developer.
4) Property is subject to other general utility easement and drainage easement as noted on plat.



DABNEY
Engineering and Land Surveying
213 East First Street
Campbellsville, Kentucky 42718
270-789-4458